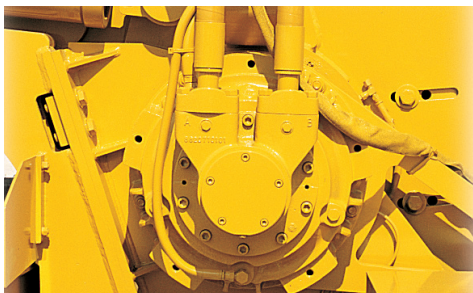


# T955 COMMANDER® 3 TRENCHER



**SMARTTEC ELECTRONIC CONTROL SYSTEM.** SmartTEC performance monitoring assists operators with adjustments to machine controls to help improve efficiency and tracks the operational performance of the machine on a consistent platform across all machine models.



**ROTARY POWER TRENCHER DRIVE MOTOR.** A Rotary Power trencher drive motor and splined headshaft produce a lower speed and higher torque which provide superior ground penetration and low chain wear for better production results.



**ELEVATING ROPM CAB.** The elevating rollover protective module cab features Lexan glass, filtered and pressurized air, heating and air-conditioning. The cab's vantage point allows a virtually unrestricted view of the boom, trench and conveyor.



**VANTAGE TRACK.** Relax in the confidence that your investment is protected and your entire closed-loop hydrostatic system is covered with either an optional 3-year/3000 or 5-year/5000 hour Extended Care Service program.



**TERRAIN LEVELER® SURFACE EXCAVATION MACHINE (SEM) ATTACHMENT.** The T955III has a chain drive Terrain Leveler SEM optional attachment for large rock excavation applications including surface mining, overburden removal, site preparation and road demolition.



**FULL FUNCTION REMOTE CONTROL.** The T955III is available with an optional wireless remote control that can provide full operator function remotely.

# T955III TRENCHER

## GENERAL DIMENSIONS

Approach angle: 16°

Height: 11.1' (3.4 m)

Length range: 32.2' – 39.7' (9.8 m – 12.1 m)

Weight range (tractor plus trencher attachment): 96,000 lb – 109,000 lb (43,544.9 kg – 49,441.6 kg)

Width: 9.5' (2.9 m)

## ENGINE OPTION ONE

Make and model: Caterpillar C13 ACERT

Gross horsepower: 415 hp (310 kW)

Engine rpm: 2100

Fuel consumption @ full load: 20.9 gph (79.1 L/hr)

EPA certification family: Tier 3

## ENGINE OPTION TWO

Make and model: Caterpillar C13 ACERT

Gross horsepower: 415 hp (310 kW)

Engine rpm: 2100

Fuel consumption @ full load: 21.3 gph (80.6 L/hr)

EPA certification family: Tier 4 Final (Stage IV)

## TRACKS

Ground pressure: 11.7 psi – 13.3 psi (80.7 kPa – 91.7 kPa)

Tilt track with Auto Level available: No

Track length: 13.4' (4.1 m)

Track pad type: Single, double or triple grouser

Track pad width: 24" (61 cm)

Track size: D6

Travel speed max: 148 fpm (45.1 m/min)

Service brakes: Hydrostatic

## CONVEYOR

Belt width: 30" (76.2 cm)

Max conveyor belt speed: 1070 fpm (326.1 m/min)

Conveyor belt style: Cleated or finger-type

Conveyor length: 9' or 14' (2.7 m or 4.3 m)

Conveyor shift available: Yes

Conveyor shift distance: 15" or 65" (38 cm or 165.1 cm)

Conveyor style: Curved

Discharge direction: Right or left

Discharge height: 62" or 76" (157.5 cm or 193 cm)

## CAB

Air conditioner/heater: Yes

Air suspension seat: No

AM/FM stereo with weather band: Yes

Elevating: Yes

Pressurized/Filtered air: Yes

Rollover protective module (ROPM): Yes

Level II FOPS: Yes

## TRENCHER ATTACHMENT

Boom depth options: 6', 8', 10' or 12' (1.8 m, 2.4 m, 3 m or 3.7 m)

Boom top rollers: Yes

Chain speed range: 316 fpm - 452 fpm (96.3 m/min - 137.8 m/min)

Cutting width range: 18" – 42" (45.7 cm – 106.7 cm)

End idler diameter: 40" (101.6 cm)

## CHAIN DRIVE TERRAIN LEVELER ATTACHMENT

Weight (tractor plus attachment): 118,000 lb (53,523.9 kg)

Max cutting depth: 32" (81.3 cm)

Cutting width: 132" (335.3 cm)

Drum tilt available: No

Max drum speed rpm: 59

Laser and GPS acceptable: Yes

Digging chain size: 4501

## OPTIONS

Loadout conveyor

Remote control

Vermeer Corporation reserves the right to make changes in engineering, design and specifications; add improvements; or discontinue manufacturing at any time without notice or obligation.

Equipment shown is for illustrative purposes only and may display optional accessories or components specific to their global region. Please contact your local Vermeer dealer for more information on machine specifications. Vermeer, the Vermeer logo, Equipped to Do More, Terrain Leveler and TEC are trademarks of Vermeer Manufacturing Company in the U.S. and/or other countries. Caterpillar is a trademark of

Caterpillar Inc. Lexan is a trademark of SABIC Innovative Plastics IP BV. Rotary Power is a trademark of Rotary Power Limited. © 2017 Vermeer Corporation. All Rights Reserved. Printed in the U.S.A.

Please recycle.

Vermeer



EQUIPPED TO  
DO MORE.